

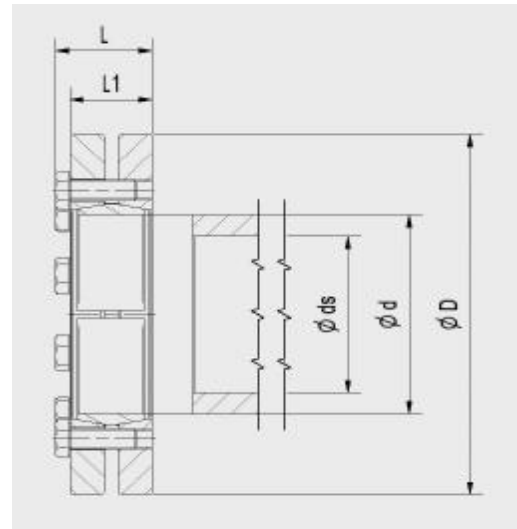
## Shrink Disc MAV 2208 heavy duty

rev. 6

### Features:

- shaft to hollow shaft connection
- 3-part design
- not self-locking
- screws DIN 931/933 grade 10.9
- shaft / hub surface finish  $Ra < 3,2 \mu m$
- hollow shaft outer diameter tolerance: h8
- hub bore / shaft fitting tolerance:

shaft size $ds$		ISO tolerances	max clearance mm
from	to		
6	10	H6 - j6	0,011
11	18		0,014
19	30		0,017
31	50	H6 - h6	0,032
51	80	H6 - g6	0,048
81	120	H7 - g6	0,069
121	180		0,079
181	250		0,090
251	315		0,101
316	400		0,111
401	500		0,123



Ma: screw tightening torque  
 Mt: max. transmissible torque (Fax=0 kN)  
 Fax: max. transmissible axial load (Mt=0Nm)  
 Ps: contact pressure on shaft  
 Ph: contact pressure on hub OD

### Example of order: MAV2208 – 140 x 230

Dimensions					Screws			Performance				Weight	
$ds$ mm	$d$ mm	$x$ mm	$D$ mm	$L$ mm	$L1$ mm	n.	size	$Ma$ Nm	$Mt$ Nm	$Fax$ kN	$Ps$ N/mm <sup>2</sup>	$Ph$ N/mm <sup>2</sup>	kg
30	40	x	80	37,3	32	4	M 8	30	1.210	80	229	296	0,90
32									1.320	80	219	296	
34	44	x	85	39,3	34	5	M 8	30	1.650	100	209	290	1,0
36									2.010	110	227	290	
38	50	x	95	44,3	39	7	M 8	30	2.750	140	269	345	1,4
40									3.210	160	283	345	
42	55	x	105	44,3	39	7	M 8	30	3.070	150	246	313	1,7
44									3.530	160	258	313	
46	62	x	115	44,3	39	7	M 8	30	3.160	140	211	278	2,0
48									3.600	150	221	278	
50	68	x	120	44,3	39	8	M 8	30	4.010	160	227	290	2,0
52									4.140	160	216	290	
55	75	x	145	52,4	46	7	M 10	59	5.680	210	221	299	3,8
58									6.700	230	235	299	
60	80	x	145	52,4	46	7	M 10	59	6.500	220	213	280	3,7
63									7.560	240	225	280	
65	90	x	160	56,4	50	8	M 10	59	7.500	230	188	256	4,9
68									8.630	250	198	256	
65									7.890	240	180	262	
70	100	x	170	60,4	54	10	M 10	59	9.900	280	195	262	5,7
75									12.100	320	208	262	
75									12.300	330	186	251	
80	110	x	185	66,4	60	12	M 10	59	14.900	370	197	251	7,2
85									16.400	390	193	251	
85									20.100	470	219	297	
90	125	x	215	73,5	66	12	M 12	100	23.800	530	231	297	11
95									27.800	590	242	297	

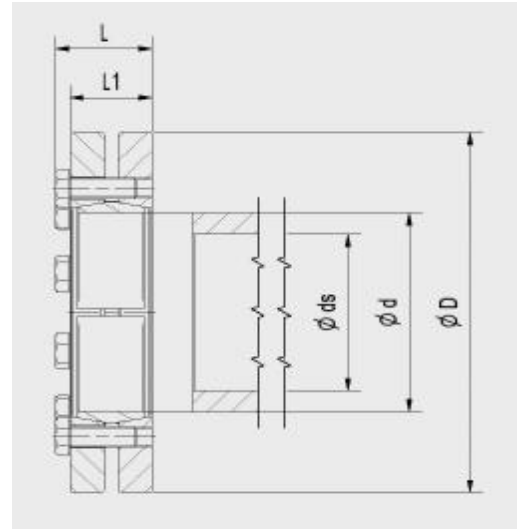
## Shrink Disc MAV 2208 heavy duty

rev. 6

### Features:

- shaft to hollow shaft connection
- 3-part design
- not self-locking
- screws DIN 931/933 grade 10.9
- shaft / hub surface finish  $R_a < 3,2 \mu\text{m}$
- hollow shaft outer diameter tolerance: h8
- hub bore / shaft fitting tolerance:

shaft size $d_s$		ISO tolerances	max clearance mm
from	to		
6	10	H6 - j6	0,011
11	18		0,014
19	30		0,017
31	50	H6 - h6	0,032
51	80	H6 - g6	0,048
81	120	H7 - g6	0,069
121	180		0,079
181	250		0,090
251	315		0,101
316	400		0,111
401	500		0,123



Ma: screw tightening torque  
 Mt: max. transmissible torque (Fax=0 kN)  
 Fax: max. transmissible axial load (Mt=0Nm)  
 Ps: contact pressure on shaft  
 Ph: contact pressure on hub OD

### Example of order: MAV2208 – 140 x 230

Dimensions					Screws		Performance				Weight
$d_s$ mm	d x D mm mm	L mm	L1 mm	n.	size	Ma Nm	Mt Nm	Fax kN	Ps N/mm <sup>2</sup>	Ph N/mm <sup>2</sup>	kg
95	140 x 230	81,5	74	12	M 12	100	21.500	450	169	239	13
100							25.200	500	178	239	
105							29.200	560	187	239	
105	155 x 263	87,5	80	15	M 12	100	31.100	590	182	245	20
110							35.600	650	189	245	
115							40.500	700	197	245	
115	165 x 290	98,0	88	10	M 16	250	48.300	840	215	270	27
120							54.200	900	222	270	
125							59.200	950	223	270	
125	175 x 300	98,0	88	10	M 16	250	53.200	850	201	255	28
130							59.400	910	207	255	
135							66.000	980	213	255	
135	185 x 330	122,0	112	15	M 16	250	92.900	1.400	235	283	46
140							102.000	1.500	241	283	
145							112.000	1.500	246	283	
145	195 x 350	122,0	112	15	M 16	250	103.000	1.400	226	268	51
150							113.000	1.500	231	268	
155							123.000	1.600	236	268	
145	200 x 350	122,0	112	15	M 16	250	99.000	1.400	217	262	51
150							108.000	1.400	221	262	
155							118.000	1.500	226	262	
160	220 x 370	144,0	134	20	M 16	250	148.000	1.900	215	256	66
165							160.000	1.900	219	256	
170							173.000	2.000	223	256	
170	240 x 405	157,0	144	15	M 20	490	181.000	2.100	221	261	86
180							205.000	2.300	224	261	
190							236.000	2.500	231	261	

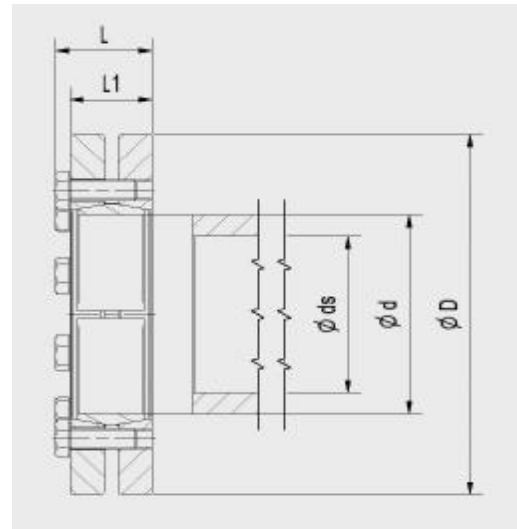
## Shrink Disc MAV 2208 heavy duty

rev. 6

### Features:

- shaft to hollow shaft connection
- 3-part design
- not self-locking
- screws DIN 931/933 grade 10.9
- shaft / hub surface finish  $R_a < 3,2 \mu\text{m}$
- hollow shaft outer diameter tolerance: h8
- hub bore / shaft fitting tolerance:

shaft size $ds$		ISO tolerances	max clearance mm
from	to		
6	10	H6 - j6	0,011
11	18		0,014
19	30		0,017
31	50	H6 - h6	0,032
51	80	H6 - g6	0,048
81	120	H7 - g6	0,069
121	180		0,079
181	250		0,090
251	315		0,101
316	400		0,111
401	500		0,123



Ma: screw tightening torque  
 Mt: max. transmissible torque (Fax=0 kN)  
 Fax: max. transmissible axial load (Mt=0Nm)  
 Ps: contact pressure on shaft  
 Ph: contact pressure on hub OD

### Example of order: MAV2208 – 140 x 230

Dimensions					Screws		Performance				Weight
$ds$ mm	$d \times D$ mm	$L$ mm	$L1$ mm	n.	size	$Ma$ Nm	$Mt$ Nm	$Fax$ kN	$Ps$ N/mm <sup>2</sup>	$Ph$ N/mm <sup>2</sup>	kg
190	260 x 430	173,0	160	18	M 20	490	252.000	2.700	218	255	105
200							287.000	2.900	224	255	
210							325.000	3.100	230	255	
210	280 x 460	185,0	172	20	M 20	490	323.000	3.100	210	242	129
220							364.000	3.300	215	242	
230							407.000	3.500	220	242	
230	300 x 485	189,0	176	20	M 20	490	365.000	3.200	193	220	144
240							406.000	3.400	197	220	
245							428.000	3.500	199	220	
240	320 x 520	197,0	184	24	M 20	490	450.000	3.700	207	235	174
250							492.000	3.900	209	235	
260							543.000	4.200	213	235	
250	340 x 570	215,0	200	20	M 24	840	544.000	4.400	210	241	237
260							600.000	4.600	214	241	
270							659.000	4.900	218	241	
270	350 x 580	215,0	200	21	M 24	840	667.000	4.900	221	246	242
280							729.000	5.200	224	246	
290							794.000	5.500	228	246	
280	360 x 590	219,0	204	20	M 24	840	661.000	4.700	199	223	248
290							721.000	5.000	202	223	
295							753.000	5.100	204	223	
300	390 x 660	227,0	212	24	M 24	840	850.000	5.700	213	236	335
310							920.000	5.900	216	236	
320							986.000	6.200	217	236	
330	420 x 690	253,0	238	30	M 24	840	1.210.000	7.300	220	241	400
340							1.300.000	7.600	222	241	
350							1.390.000	7.900	225	241	

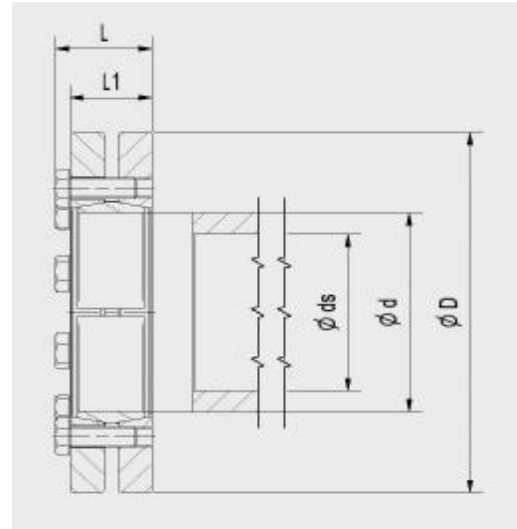
## Shrink Disc MAV 2208 heavy duty

rev. 6

### Features:

- shaft to hollow shaft connection
- 3-part design
- not self-locking
- screws DIN 931/933 grade 10.9
- shaft / hub surface finish  $Ra < 3,2 \mu m$
- hollow shaft outer diameter tolerance: h8
- hub bore / shaft fitting tolerance:

shaft size $ds$		ISO tolerances	max clearance mm
from	to		
6	10	H6 - j6	0,011
11	18		0,014
19	30		0,017
31	50	H6 - h6	0,032
51	80	H6 - g6	0,048
81	120	H7 - g6	0,069
121	180		0,079
181	250		0,090
251	315		0,101
316	400		0,111
401	500		0,123



Ma: screw tightening torque  
 Mt: max. transmissible torque (Fax=0 kN)  
 Fax: max. transmissible axial load (Mt=0Nm)  
 Ps: contact pressure on shaft  
 Ph: contact pressure on hub OD

### Example of order: MAV2208 – 140 x 230

Dimensions					Screws		Performance				Weight		
$ds$ mm	$d$ mm	$x$ mm	$D$ mm	$L$ mm	$L1$ mm	n.	size	$Ma$ Nm	$Mt$ Nm	$Fax$ kN	$Ps$ N/mm <sup>2</sup>	$Ph$ N/mm <sup>2</sup>	kg
360	460	x	770	269,0	252	28	M 27	1250	1.650.000	9.100	241	261	540
370									1.760.000	9.500	243	261	
380									1.870.000	9.800	245	261	
380	500	x	850	291,0	274	32	M 27	1250	1.890.000	10.000	226	250	750
390									2.010.000	10.000	229	250	
400									2.140.000	11.000	231	250	

Information subject to change without prior notification. © MAV S.p.A.